

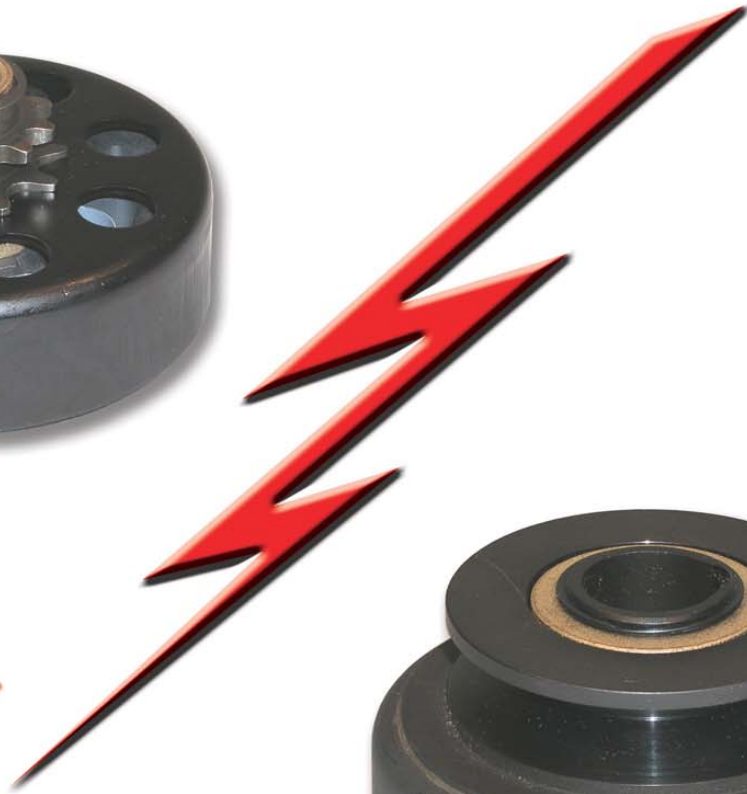


FU IBERICA, s.l.
TRANSMISIÓN DE POTENCIA

Tel. +34 932 681 833 · Fax +34 932 683 292
www.fuiberica.com · fuiberica@fuiberica.com

EXTREME DUTY

CENTRIFUGAL CLUTCHES



Hilliard
SINCE 1905



Our newest centrifugal clutch* has been engineered to provide

Extreme-Duty Go-Kart Centrifugal Clutch



The Extreme-Duty Sprocket Centrifugal Clutch is ideal for the everyday demands of go-karts and youth-model snowmobiles.

A thermodynamically designed clutch shoe increases the clutch's capacity to absorb heat without damaging the clutch springs, resulting in longer life and better reliability.

Precise and durable motion control solutions

Extreme-Duty Centrifugal Clutch	Model #	Bore Size (inches)	Keyway (inches)	Sprocket Specifications	Engaging Speed * (RPM)
Sprocket	LD4S-4	3/4	3/16	10 T, #40/41 chain	2300
	LD4S-4L	3/4	3/16		
	LD4S-5	3/4	3/16	12 T, #35 chain	2300
	LD4S-5L	3/4	3/16		
	LD4S-6	5/8	3/16	10 T, #40/41 chain	2300
	LD4S-6L	5/8	3/16		
	LD4S-7	5/8	3/16	12 T, #35 chain	2300
	LD4S-7L	5/8	3/16		

* Standard; optional engagement speeds available.

The extreme-duty centrifugal clutches share many of the same benefits and advantages:

Benefits

- Bi-directional operation
- Load-free starting
- Optional engaging speeds
- Excellent quality at a competitive price
- Easy to install
- Longer life than competitive clutches
- Overload protection

Advantages

- Integral key design
- Sintered metal clutch shoes
- Heat dispersing spring-to-shoe design
- Integral sheave (pulley version)

* U.S. Patent 6,857,515 B2



long service life, even in the most demanding applications.

Extreme-Duty Pulley Centrifugal Clutch

The Extreme-Duty Pulley Centrifugal Clutch is ideal for retrofit or new equipment applications. This clutch was designed to be a low-cost upgrade to the current low-priced centrifugal market and is ideal for the everyday demands of chipper shredders, power trowels, concrete mixers, power screeds, air compressors, lawn and garden equipment, and more.

A thermodynamically designed clutch shoe increases the clutch's capacity to absorb heat without damaging the clutch, making it more dependable and long lasting.



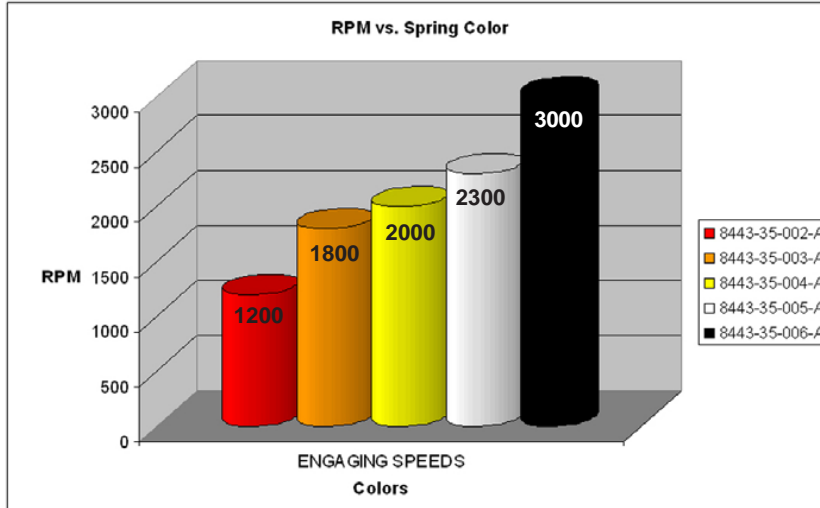
Precise and durable motion control solutions

Extreme-Duty Centrifugal Clutch	Model #	Bore Size	Keyway (inches)	Pulley Diameter (O.D. inches)	Belt Groove	Engaging Speed * (RPM)
4" Single-Groove	LD4P-46	1"	1/4	3.7	AB	1800
	LD4P-59	25mm	1/4	3.7	AB	1800
	LD4P-48	7/8"	3/16	3.7	AB	1800
	LD4P-49	3/4"	3/16	3.7	AB	1800
	LD4P-57	5/8"	3/16	3.7	AB	1800
	LD4P-50	1"	1/4	3.0	AB	1800
	LD4P-58	25mm	1/4	3.0	AB	1800
	LD4P-52	7/8"	3/16	3.0	AB	1800
	LD4P-53	3/4"	3/16	3.0	AB	1800
	LD4P-56	5/8"	3/16	3.0	AB	1800

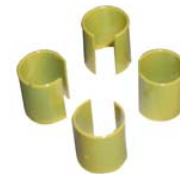
* Standard; optional engagement speeds available.



Clutches are available with optional spring sets for different engagement speeds.



3000 RPM Spring (optional)



2000 RPM Spring (optional)



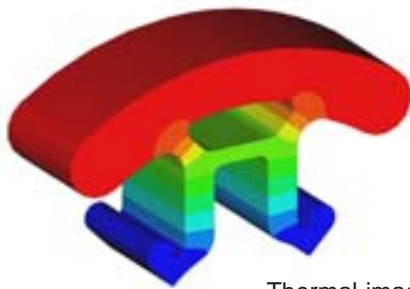
1800 RPM Spring



2300 RPM Spring



1200 RPM Spring (optional)



Thermal image of clutch shoe

The Hilliard Corporation reserves the right to change specifications and dimensions at any time. Please contact the factory for the most current information.

The Hilliard Corporation
100 West Fourth Street
Elmira, New York 14902-1504
Phone: 607-733-7121
Fax: 607-732-8979
Email: hilliard@hilliardcorp.com
<http://www.hilliardextremeduty.com>

Your Local Representative:

